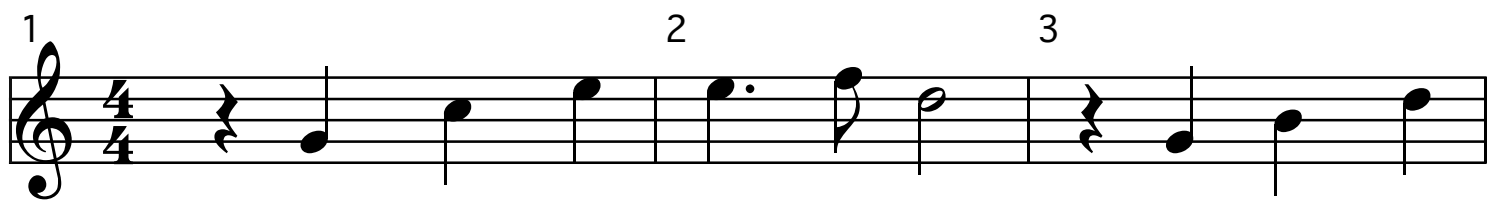
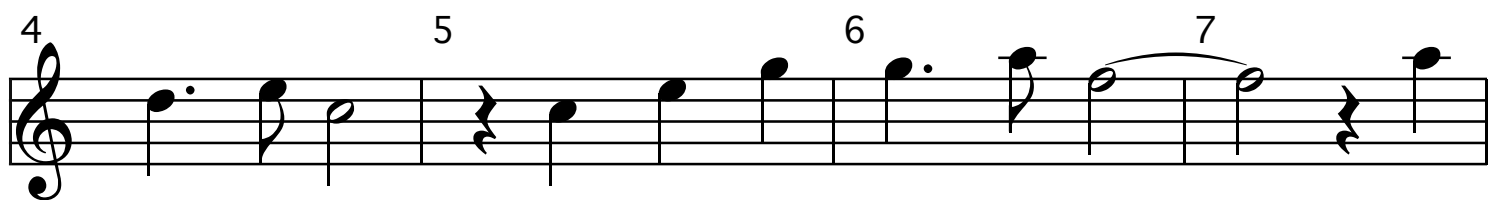


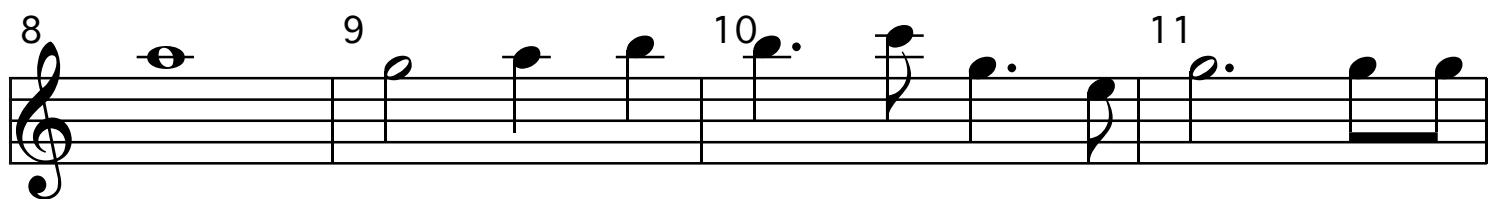
# SEI IL MIO RIFUGIO



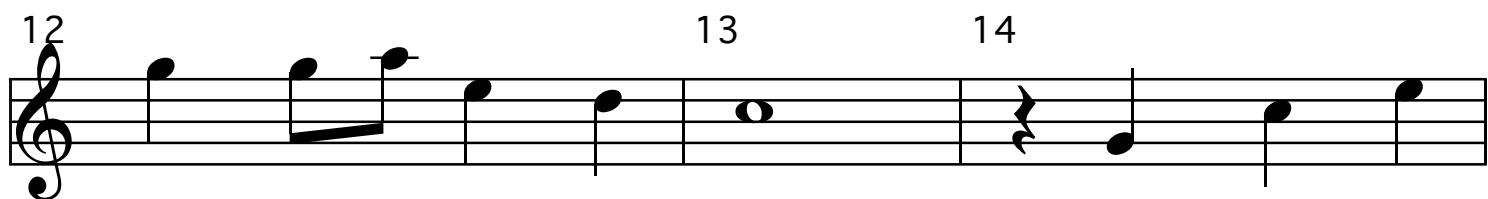
Sei il mio ri - fu - gi - o, la mia sal -



- ve - z - za, tu mi pro - teg - ge - rai \_\_\_\_\_ dal



ma - le, mi cir - con - de - rai d'a - mor e il mio



cuo - re li - be - re - rai. Non ho ti -



- mo - re, \_\_\_\_\_ io con - fi - do in Te.